



MATERIAL HANDLING TECHNOLOGY SINCE 1946

SGAI-C VSF I 30/2

Datasheet



SELF-MOVED ELECTRONIC TRAILER, series SGA I-C VSF I 30/2, operator on board,
for factory material handling on concrete and good asphalt, flat and levelled floor

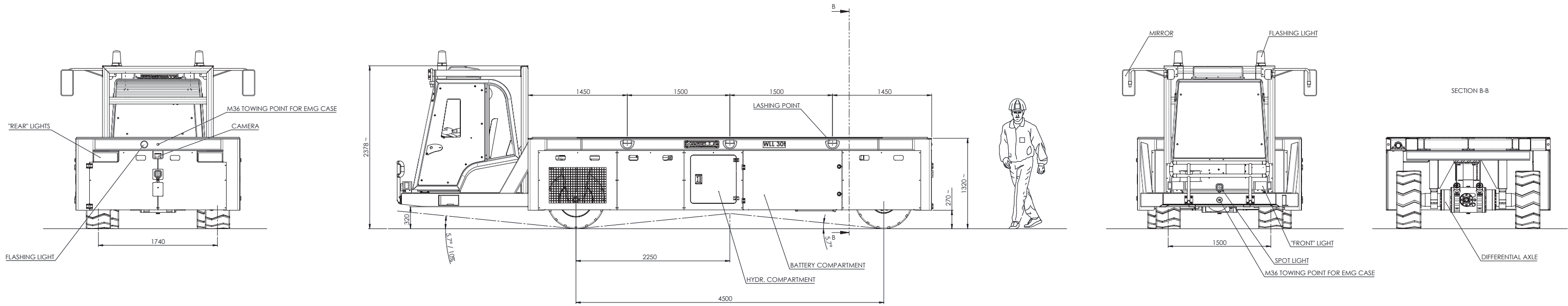
TECHNICAL DATA

▪ Working Load Limit:	30 t evenly distributed
▪ Dead weight:	12.000 Kg approx.
▪ Loading platform dimensions:	length 5.900 mm approx. width 2.400 mm approx.
▪ Loading platform height:	1.350 mm approx. from ground
▪ Overall dimensions:	length 7.815 mm approx. width 2.400 mm approx.
▪ Ground clearance:	min. 200 mm
▪ Loading platform covering:	steel sheet
▪ N° axle lines:	2
▪ N° steering axle lines:	1
▪ Kind of wheels:	pneumatic
▪ N° wheels:	4
▪ N° driven wheels:	2
▪ Kind of steering:	front axle steering by +/- 45°
▪ Speed:	up to 5 km/h with full load
▪ Climbing ability:	10% approx. with full load
▪ Command:	completely closed driving cabin with heating and AC
▪ Power supply:	lithium battery 880 Ah 96 V
▪ Battery autonomy:	10 km of real operation (50% with full load + 50% without load)
▪ Supply voltage:	400 V – 50 Hz – 3ph
▪ Certifications:	2006/42/CE
▪ Documents language:	English

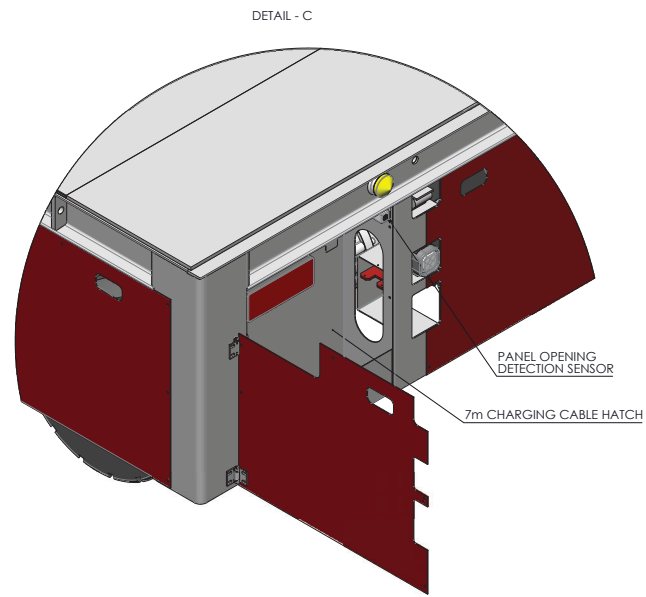
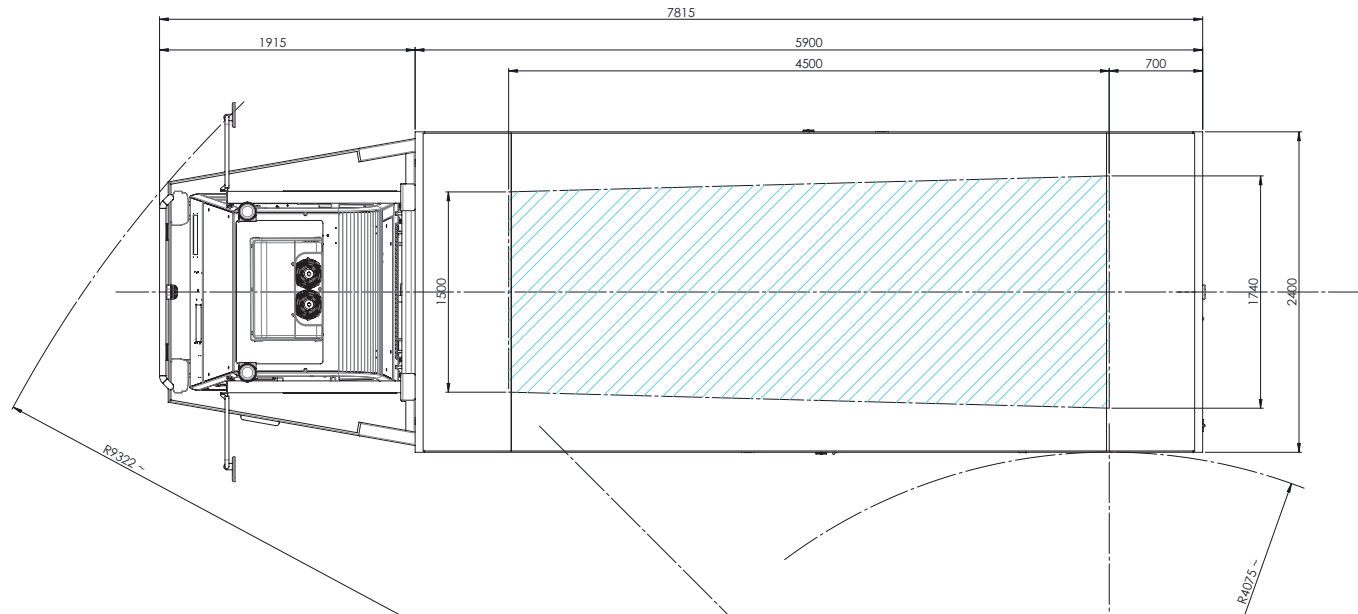
WATCH HERE A SIMILAR TROLLEY VIDEO: [Video](#)

Notes:

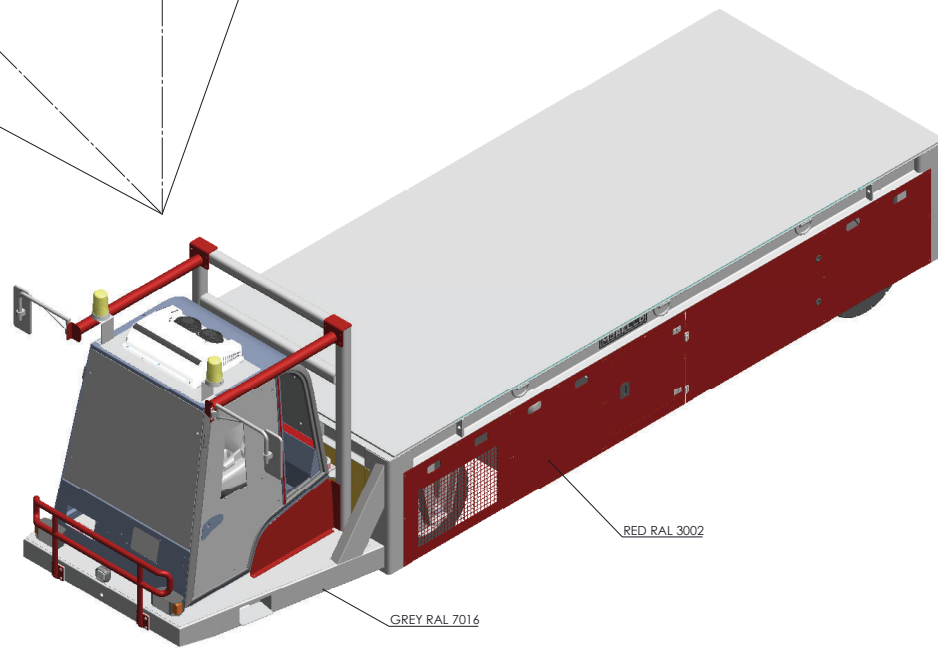
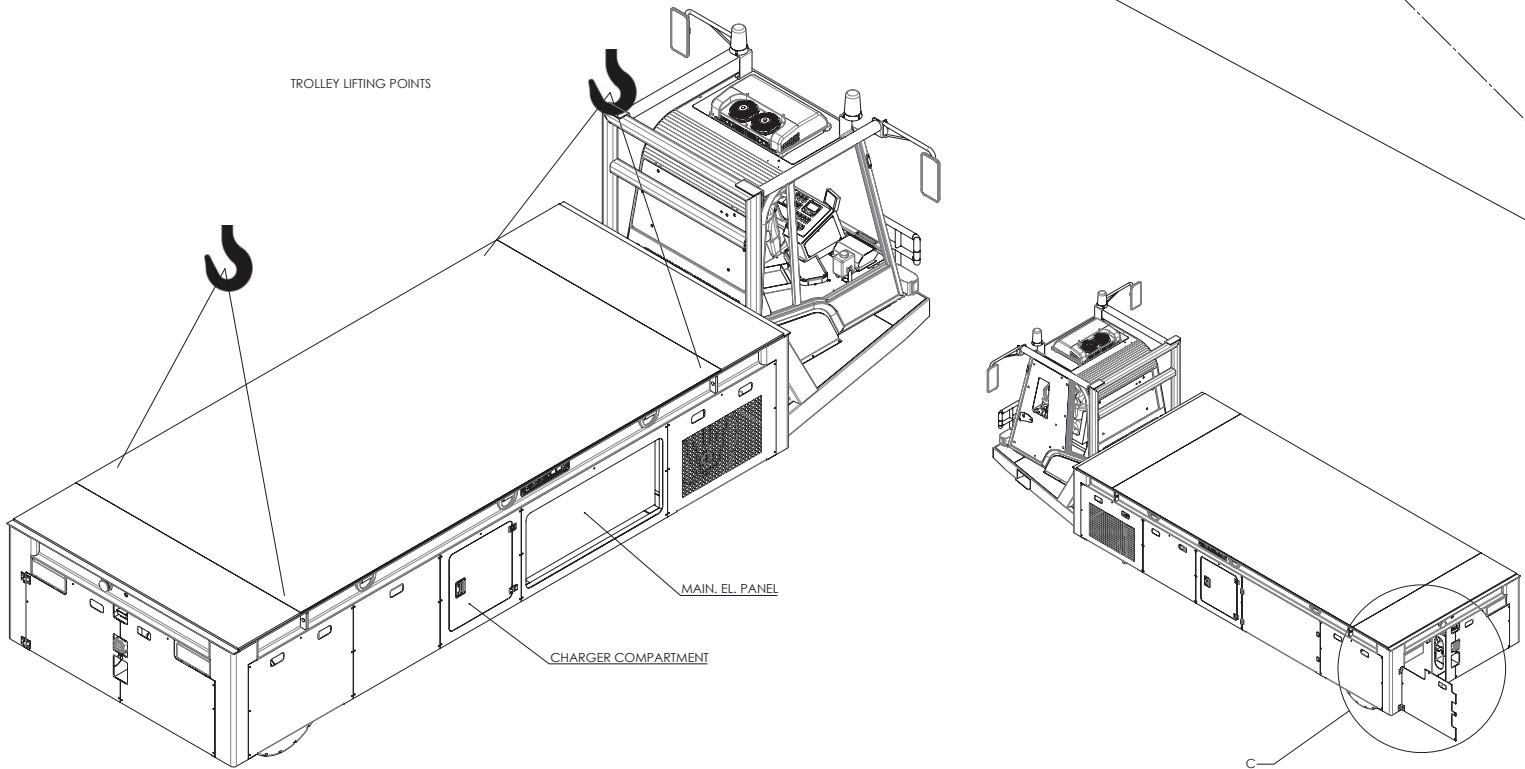
All pictures/drawings in this document are for illustrative purpose only. MORELLO S.r.l. it reserves the right to technical modification in order to improve the quality and reliability of the product. Legal notes: this document is strictly confidential; it contains Morello's property confidential information, and it cannot be disclosed to third parties without Morello prior written approval. The offer above is exclusively limited to the specific case for which it has been requested and does not rise any right to similar or identical offers for other circumstances.



CHARACTERISTICS
N. 4 PNEUMATIC WHEEL 355/65-15 - 32 RIM 9.7
N.1 REAR CAMERA
N. 4 LIFTING POINT
N.2 M36 TOWING POINT FOR EMG CASE
N. 1 MOTORE DI TRAZIONE AC 96V 40Kw 1500rpm IP65
N.1 MOTOR-PUMP AC 10Kw 96V 2200rpm IP 65
N. 2 FLASHING LIGHT
N.2 SPOT LIGHTS
N. 1 Li BATTERY 96V 880Ah
N. 1 ONBOARD CHARGER
- POWER 400V 50Hz 3ph
- PLUG GEWISS GW60460 3ph (3ph+T), 125A
N.6 LASHING POINT D-RING MBL 36T
ACOUTIC SIGNAL SIGNALLING "TRAILER IN MOTION"
MAXIMUM SPEED 5 km/h
MAXIMUM SUPERABLE SLOPE 10%
DEADLOAD ~ 12.000 Kg
COLOUR RED RAL 3002 AND GREY RAL 7016



TROLLEY LIFTING POINTS



MORELLO

INNER TRANSPORTATION TECHNOLOGY

Lgo Dora Colletta 85/A
10153 Torino (Italy)
Tel. 011/2480569 - Fax 850085

e-mail: info@morellogiovanni.it
<http://www.morellogiovanni.it>

PROJECT:

TROLLEY SERIES SGAI C VSF I 30/2

Dim. : 5.900 x 2.400 mm

Payload 30t

DESCRIPTION:

Assembly Drawing

Rev. 03	02/02/2023	CAMBIO COLORE DA GIALLO RAL 1018 A ROSSO RAL 3002	A.T.O.
REVISED	DATE	DESCRIPTION	OPER. REFERENCE
BY: A.Tenore	27/01/2025		
FOR BY:	SCALE: 1:20		ITEM NUMBER